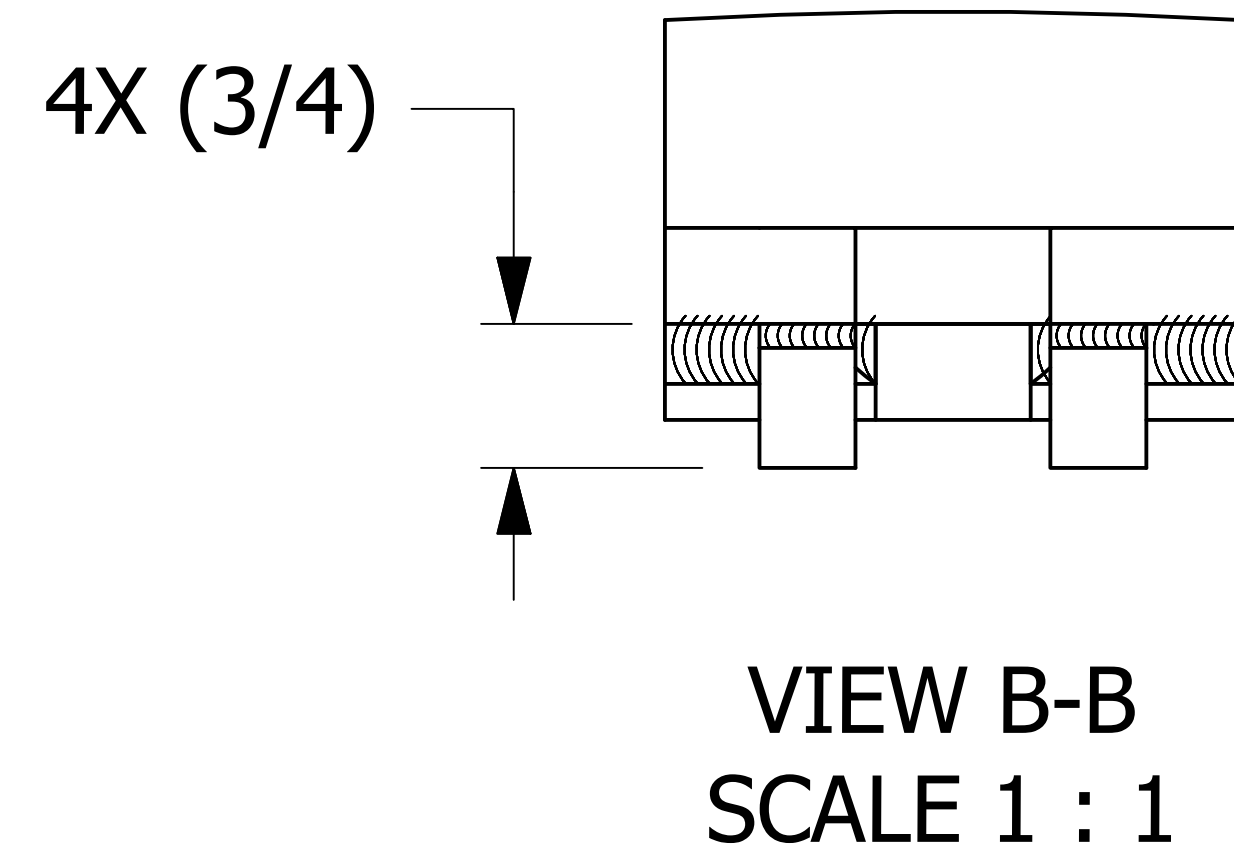
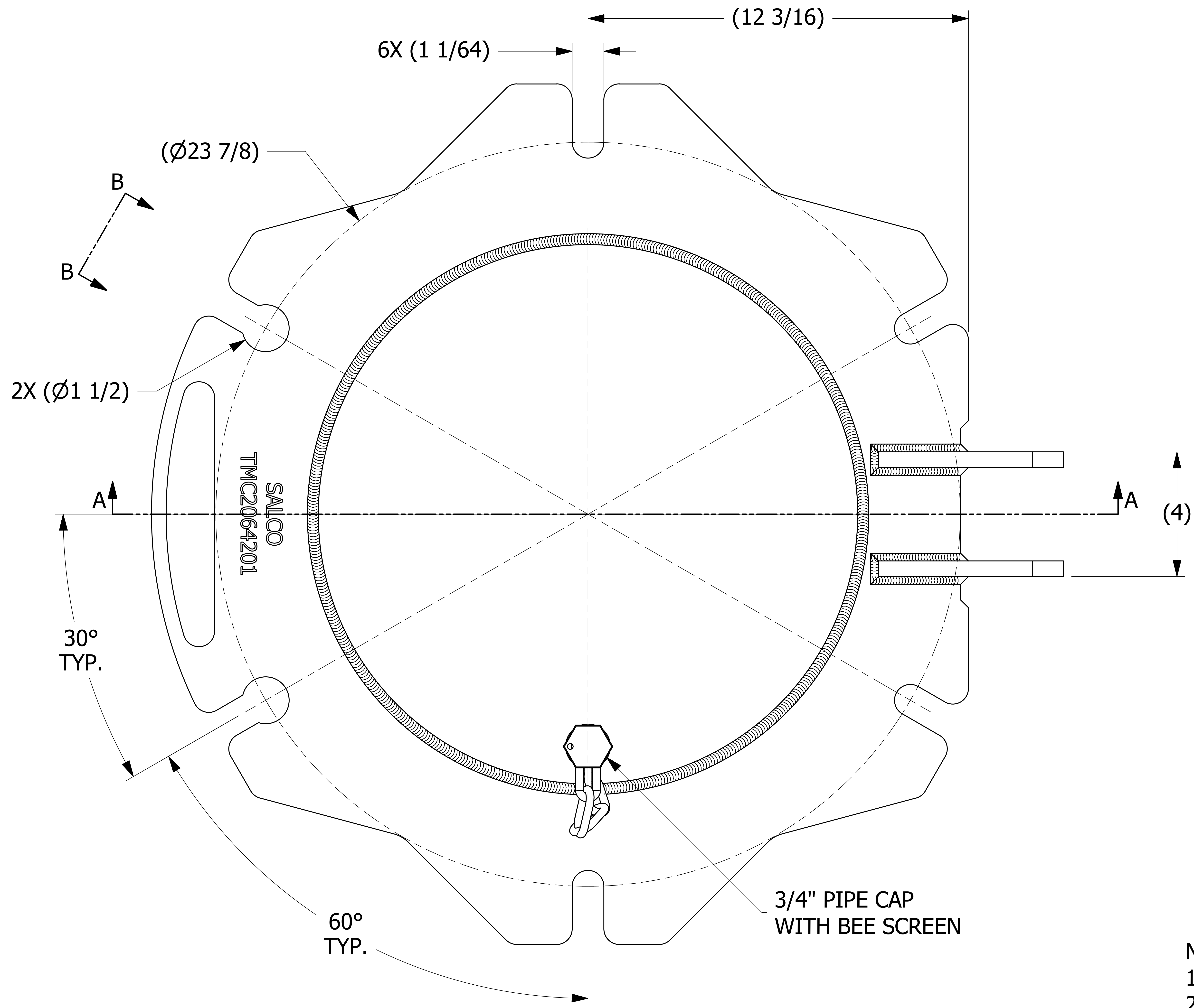
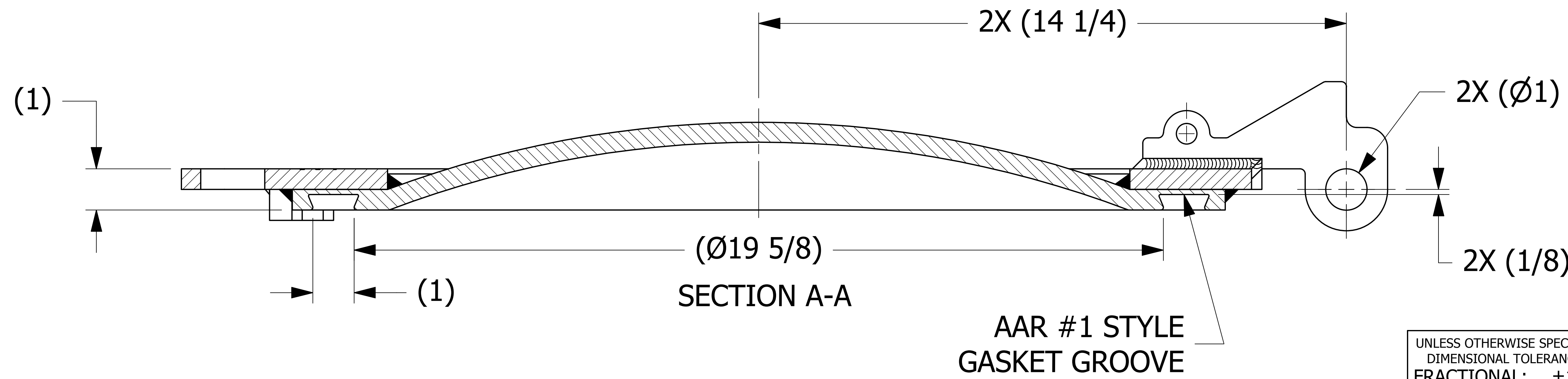


SALES DRAWING SALES DRAWING SALES DRAWING SALES DRAWING SALES DRAWING

SALES DRAWING SALES DRAWING SALES DRAWING SALES DRAWING SALES DRAWING



- NOTES:
 1. AAR APPROVAL # E-182114.
 2. UNDERSIDE OF DOME HAS A SATIN FINISH.



E	WEB	4-4-19	REMOVED QAP4A-1 NOTE; Q-2.15.7 WAS QAP4C-1; D-008 WAS DSS 12; ADDED D-005 NOTE; AAR # WAS E-089005
D	RJP	11-17-17	HINGE WELD WAS 3/8"; ADDED GRIND FLUSH TO NIPPLE WELD; ADDED NOTES 6 & 7; ADDED "SALCO" TO ENGRAVING
C	RJP	3-21-17	TMC20642 WAS TMC20656 & TMCD20H07556SF; A29293 WAS A14392; 4.00 +.00/-.06 WAS 4.00; REMOVED QAP5A-1 NOTE, 4X (11 61/64), & 4X .38; ADDED LOT CONTROL NOTE, 4X .55, & 4X (3/4); UPDATED WELD NOTE
B	JG	1-15-16	REPLACED TMCHS4TR W/ B41297
A	JJK	4-4-13	RELEASED FOR PRODUCTION
REV	BY	DATE	DESCRIPTION

UNLESS OTHERWISE SPECIFIED DIMENSIONAL TOLERANCES FRACTIONAL: ±1/16 X.XX: ±.03 X.XXX: ±.015 ANGULAR: ±1° DEBURR ALL SHARP EDGES. ALL MACHINED SURFACES TO HAVE A 125 RMS FINISH UNLESS NOTED OTHERWISE. THIRD ANGLE PROJECTION	DRAWN BY: JJK CHECKED BY: CHL PROTOTYPE BY: JJK PROTOTYPE DATE: 3/18/2013 APPROVED FOR PRODUCTION BY: JJK PRODUCTION DATE: 4/4/2013
--	--

SALCO PRODUCTS, INC.	
PART NAME: MANWAY COVER 20" 6-BOLT	
MATERIAL: 316L SS	SHEET #: 1 OF 1
PROJECT #: 130318FR	SCALE: 2:3
DRAWING #: E35748	PART #: TMC2064201